



MATRX® CUSHIONS
US PRICE LIST/ORDER FORM
 Effective March 16, 2026



Date of Order: _____	Ship to Address: _____
Dealer Name: _____	_____
Dealer Account #: _____	City: _____
PO #: _____	State: _____ Zip: _____
Tag: _____	Comments: _____
Purchasing Contact: _____	_____
Phone: _____ Fax: _____	_____

Cushion Overview

▶ Page

Matrx® Cushion Size Reference Guide	2/3
-------------------------------------	-----

Pediatric Cushions

▶ Page

Matrx® PS Mini Cushion/Extra Outer Cover	4
Matrx® PSP Mini Cushion/Extra Outer Cover	5
Matrx® Multi Cushion/Extra Outer Cover	6
Matrx® Kid*ab*ra Cushion/Extra Outer Cover	6

Standard Cushions

▶ Page

Matrx® PS Cushion/Extra Outer Cover	7
Matrx® PSP Cushion/Extra Outer Cover	8
Matrx® Multi Cushion/Extra Outer Cover	9
Matrx® Vi Cushion/Extra Outer Cover	10
Matrx® Vi Cushion Rigidizer	7
Matrx® Libra Cushion/Extra Outer Cover	11
Matrx® Libra Adjust Cushion/Extra Outer Cover	12

Bariatric Cushions

▶ Page

Matrx® PS Heavy-Duty Cushion/Extra Outer Cover	13
Matrx® PSP Heavy-Duty Cushion/Extra Outer Cover	14
Matrx® Multi Heavy-Duty Cushion/Extra Outer Cover	15
Matrx® Vi Heavy-Duty Cushion/Extra Outer Cover	15
Matrx® Libra Heavy-Duty Cushion/Extra Outer Cover	16
Matrx® Libra Adjust Heavy-Duty Cushion/Extra Outer Cover	17

Modifications & Accessories

▶ Page

Matrx® Libra Fit Kit Components	18
Matrx® Protect- Infection Control Slipcovers (fits all Matrx Cushions)	19
Cushion/Cover Modifications	19

MATRX® CUSHIONS – US PRICE LIST/ORDER FORM

MATRX® CUSHIONS: (Standard/Heavy-Duty) - Cushion Size Reference Guide

Cushion Size	PS Model No.	PSP Model No.	Multi Model No.	Vi Model No.	Libra Model No.	Libra Adjust Model No.
1414			MM1414			
1415				MA1415-Vi		
1416	PS1416	PSP1416	MM1416		LC1416	LC1416ADJ
1417				MA1417-Vi		
1516					LC1516	LC1516ADJ
1518					LC1518	LC1518ADJ
1520					LC1520	LC1520ADJ
1616	PS1616	PSP1616	MM1616	MA1616-Vi	LC1616	LC1616ADJ
1618	PS1618	PSP1618	MM1618	MA1618-Vi	LC1618	LC1618ADJ
1620	PS1620	PSP1620	MM1620	MA1620-Vi	LC1620	LC1620ADJ
1622					LC1622	LC1622ADJ
1716	PS1716	PSP1716	MM1716	MA1716-Vi	LC1716	LC1716ADJ
1718	PS1718	PSP1718	MM1718	MA1718-Vi	LC1718	LC1718ADJ
1720	PS1720	PSP1720	MM1720	MA1720-Vi	LC1720	LC1720ADJ
1722					LC1722	LC1722ADJ
1816	PS1816	PSP1816	MM1816	MA1816-Vi	LC1816	LC1816ADJ
1818	PS1818	PSP1818	MM1818	MA1818-Vi	LC1818	LC1818ADJ
1820	PS1820	PSP1820	MM1820	MA1820-Vi	LC1820	LC1820ADJ
1822					LC1822	LC1822ADJ
1916					LC1916	LC1916ADJ
1918					LC1918	LC1918ADJ
1920					LC1920	LC1920ADJ
1922					LC1922	LC1922ADJ
2016	PS2016	PSP2016	MM2016	MA2016-Vi	LC2016	LC2016ADJ
2018	PS2018	PSP2018	MM2018	MA2018-Vi	LC2018	LC2018ADJ
2020	PS2020	PSP2020	MM2020	MA2020-Vi	LC2020	LC2020ADJ
2022					LC2022	LC2022ADJ
2118					LC2118	LC2118ADJ
2120					LC2120	LC2120ADJ
2122					LC2122	LC2122ADJ
2216			MM2216			
2218	PS2218	PSP2218	MM2218	MA2218-Vi	LC2218	LC2218ADJ
2220	PS2220	PSP2220	MM2220	MA2220-Vi	LC2220	LC2220ADJ
2222	PS2222	PSP2222	MM2222		LC2222	LC2222ADJ
2318					LC2318	LC2318ADJ
2320					LC2320	LC2320ADJ
2322					LC2322	LC2322ADJ
2418	PS2418	PSP2418		MA2418-Vi-HD	LC2418	LC2418ADJ
2420	PS2420	PSP2420		MA2420-Vi-HD	LC2420	LC2420ADJ
2422	PS2422	PSP2422		MA2422-Vi-HD	LC2422	LC2422ADJ
2618	PS2618	PSP2618				
2620	PS2620	PSP2620				
2622	PS2622	PSP2622				

HEAVY-DUTY CUSHIONS <i>(Custom Sizes)</i> <i>(2 week lead-time)</i>	PS HD Cushion	PSP HD Cushion	Vi HD Cushion
	Widths 21"- 30" Depths 16"- 30"	Widths 21"- 30" Depths 16"- 30"	Widths 21"- 30" Depths 21"- 26"

Stock Bariatric HD Sizes

MATRIX® CUSHIONS – US PRICE LIST/ORDER FORM

MATRIX® CUSHIONS: (Pediatric) - Cushion Size Reference Guide

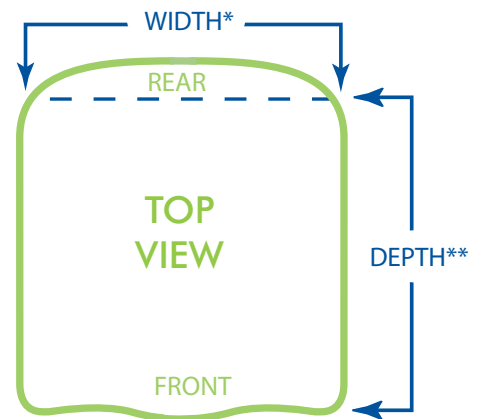
Cushion Size	PS Mini Model No.	PSP Mini Model No.	Multi Model No.	Kid*ab*ra-Vi Model No.	Libra Model No.	Libra Adjust Model No.
0810	*PS0810					
0812	*PS0812					
0910	*PS0910					
0912	*PS0912					
1010	PS1010	PSP1010				
1012	PS1012	PSP1012				
1014	PS1014	PSP1014				
1112	PS1112	PSP1112				
1114	PS1114	PSP1114				
1116	PS1116	PSP1116				
1212	PS1212	PSP1212		KA1212-Vi		
1214	PS1214	PSP1214		KA1214-Vi		
1216	PS1216	PSP1216				
1312	PS1312	PSP1312				
1314	PS1314	PSP1314				
1316	PS1316	PSP1316				
1412	PS1412	PSP1412		KA1412-Vi	LC1412	LC1412ADJ
1414	PS1414	PSP1414	MM1414	KA1414-Vi	LC1414	LC1414ADJ
1416	PS1416	PSP1416	MM1416		LC1416	LC1416ADJ

** 2 week lead time required*

MATRIX® FABRIC OPTIONS



MATRIX® CUSHION WIDTH/DEPTH



MATRIX® CUSHIONS – US PRICE LIST/ORDER FORM

MATRIX® PS MINI CUSHION: Pediatric Positioning Cushion

NOTE: Actual cushion width is ½" narrower than stated size and cushion depth is 1" longer than stated depth due to rear cushion radius. Reference illustration on Page 3

- Cushion modifications are available and can be specified on Page 18 (cover will be non-reversible)
- Weight capacity up to 150 lbs
- Comes standard with inner cover and reversible Startex® outer covers
- No charge outer cover options: Kid*ab*ra, Black Startex, Pink Lollipop or Blizzard Blue (all non-reversible)- Cover Fabric Reference on Page 3

PS Mini Cushion

▶ HCPCS Code: E2605



MODEL	FITS WIDTH	FITS DEPTH	MSRP
<input type="checkbox"/> PS0810*	7", 8"	10", 11"	\$404.00
<input type="checkbox"/> PS0812*	7", 8"	12", 13"	\$404.00
<input type="checkbox"/> PS0910*	8", 9"	10", 11"	\$404.00
<input type="checkbox"/> PS0912*	8", 9"	12", 13"	\$404.00
<i>*Note: Custom cushion size (2 week lead time required)</i>			
<input type="checkbox"/> PS1010	9", 10"	10", 11"	\$383.00
<input type="checkbox"/> PS1012	9", 10"	12", 13"	\$383.00
<input type="checkbox"/> PS1014	9", 10"	14", 15"	\$383.00
<input type="checkbox"/> PS1112	10", 11"	12", 13"	\$383.00
<input type="checkbox"/> PS1114	10", 11"	14", 15"	\$383.00
<input type="checkbox"/> PS1116	10", 11"	16", 17"	\$383.00
<input type="checkbox"/> PS1212	11", 12"	12", 13"	\$383.00
<input type="checkbox"/> PS1214	11", 12"	14", 15"	\$383.00
<input type="checkbox"/> PS1216	11", 12"	16", 17"	\$383.00
<input type="checkbox"/> PS1312	12", 13"	12", 13"	\$383.00
<input type="checkbox"/> PS1314	12", 13"	14", 15"	\$383.00
<input type="checkbox"/> PS1316	12", 13"	16", 17"	\$383.00
<input type="checkbox"/> PS1412	13", 14"	12", 13"	\$383.00
<input type="checkbox"/> PS1414	13", 14"	14", 15"	\$383.00
<input type="checkbox"/> PS1416	13", 14"	16", 17"	\$383.00
<input type="checkbox"/> NIC (NO Inner Cover option)			(-\$35)

COVER OPTIONS:

SPECIFY:	<input type="checkbox"/> PSC (Black Startex)	<input type="checkbox"/> PSC-K (Kid*ab*ra)
	<input type="checkbox"/> PSC-P (Pink Lollipop)	<input type="checkbox"/> PSC-B (Blizzard Blue)
	<input type="checkbox"/> POK Pelvic Obliquity Kit	\$59.00
	<i>Accommodates up to 1" Obliquities on cushions 12" Wide and greater</i>	
	<i>Cushion Rigidizers can be found on Page 7</i>	

PS Mini Extra Outer Cover (Refer to cushion sizes above for proper fit)

▶ HCPCS Code: E2619



MODEL	COVER OPTION	MSRP
<input type="checkbox"/> PSC(wwdd)	Startex	\$99.00
<input type="checkbox"/> PSC(wwdd)-K	Kid*ab*ra	\$99.00
<input type="checkbox"/> PSC(wwdd)-P	Pink Lollipop	\$99.00
<input type="checkbox"/> PSC(wwdd)-B	Blizzard Blue	\$99.00
SPECIFY SIZE:	WIDTH _____ DEPTH _____	QTY _____

MATRIX® CUSHIONS – US PRICE LIST/ORDER FORM

MATRIX® PSP MINI CUSHION: Pediatric – Skin Protection & Positioning Cushion

NOTE: Actual cushion width is ½" narrower than stated size and cushion depth is 1" longer than stated depth due to rear cushion radius. Reference illustration on Page 3

- Cushion modifications are available and can be specified on Page 18 (cover will be non-reversible)
- Weight capacity up to 150 lbs
- Comes standard with inner cover and reversible Startex® outer cover
- No charge outer cover options: Kid*ab*ra, Pink Lollipop or Blizzard Blue (all non-reversible) - Cover Fabric Reference on Page 3

PSP Mini Cushion

► HCPCS Code: E2607



MODEL	FITS WIDTH	FITS DEPTH	MSRP
<input type="checkbox"/> PSP1010	9", 10"	10", 11"	\$438.00
<input type="checkbox"/> PSP1012	9", 10"	12", 13"	\$438.00
<input type="checkbox"/> PSP1014	9", 10"	14", 15"	\$438.00
<input type="checkbox"/> PSP1112	10", 11"	12", 13"	\$438.00
<input type="checkbox"/> PSP1114	10", 11"	14", 15"	\$438.00
<input type="checkbox"/> PSP1116	10", 11"	16", 17"	\$438.00
<input type="checkbox"/> PSP1212	11", 12"	12", 13"	\$438.00
<input type="checkbox"/> PSP1214	11", 12"	14", 15"	\$438.00
<input type="checkbox"/> PSP1216	11", 12"	16", 17"	\$438.00
<input type="checkbox"/> PSP1312	12", 13"	12", 13"	\$438.00
<input type="checkbox"/> PSP1314	12", 13"	14", 15"	\$438.00
<input type="checkbox"/> PSP1316	12", 13"	16", 17"	\$438.00
<input type="checkbox"/> PSP1412	13", 14"	12", 13"	\$438.00
<input type="checkbox"/> PSP1414	13", 14"	14", 15"	\$438.00
<input type="checkbox"/> PSP1416	13", 14"	16", 17"	\$438.00
<input type="checkbox"/> NIC (NO Inner Cover option)			(-\$35)

COVER OPTIONS:

- SPECIFY: PSC (Black Startex) PSC-K (Kid*ab*ra)
 PSC-P (Pink Lollipop) PSC-B (Blizzard Blue)

- POK Pelvic Obliquity Kit \$59.00
Accommodates up to 1/2" Obliquities on cushions 12" Wide and

Cushion Rigidizers ^{greater} can be found on Page 7

PSP Mini Extra Outer Cover (Refer to cushion sizes above for proper fit)

► HCPCS Code: E2619



MODEL	COVER OPTION	MSRP
<input type="checkbox"/> PSPC(wwdd)	Startex	\$99.00
<input type="checkbox"/> PSPC(wwdd)-K	Kid*ab*ra	\$99.00
<input type="checkbox"/> PSPC(wwdd)-P	Pink Lollipop	\$99.00
<input type="checkbox"/> PSPC(wwdd)-B	Blizzard Blue	\$99.00

SPECIFY SIZE: WIDTH _____ DEPTH _____ QTY _____

MATRIX® CUSHIONS – US PRICE LIST/ORDER FORM

MATRIX® MULTI CUSHION: Pediatric – Skin Protection & Positioning Cushion

NOTE: Actual cushion width is ½" narrower than stated size and cushion depth is 1" longer than stated depth due to rear cushion radius.

- Weight capacity up to 300 lbs
- Comes standard with inner cover and reversible Startex® outer cover - Cover Fabric Reference on Page 3

new

MULTI (Posture Seat with NEW GelFoam) Cushion

▶ HCPCS Code: E2607



MODEL	FITS WIDTH	FITS DEPTH	MSRP
<input type="checkbox"/> MM1414	13", 15"	14", 15"	\$521.00
<input type="checkbox"/> MM1416	13", 15"	16", 17"	\$521.00

MULTI Extra Outer Cover (Refer to cushion sizes above for proper fit)

▶ HCPCS Code: E2619



MODEL	COVER OPTION	MSRP
<input type="checkbox"/> MMC(wwdd)	Startex Reversible Cover	\$111.00

SPECIFY: WIDTH _____ DEPTH _____ QTY _____

MATRIX® KID*AB*RA CUSHION: Pediatric – Skin Protection & Positioning Cushion

NOTE: Actual cushion width is ½" narrower than stated size and cushion depth is 1" longer than stated depth due to rear cushion radius. Reference illustration on Page 3

- Cushion modifications are available and can be specified on Page 18
- Weight capacity up to 150 lbs
- Comes standard with inner cover and Kid*ab*ra outer covers - Cover Fabric Reference on Page 3

Kid*ab*ra Cushion

▶ HCPCS Code: E2607



MODEL	FITS WIDTH	FITS DEPTH	MSRP
<input type="checkbox"/> KA1212-Vi	11", 12"	12", 13"	\$497.00
<input type="checkbox"/> KA1214-Vi	11", 12"	14", 15"	\$497.00
<input type="checkbox"/> KA1412-Vi	13", 14"	12", 13"	\$497.00
<input type="checkbox"/> KA1414-Vi	13", 14"	14", 15"	\$497.00

COVER OPTIONS:

ADD

SPECIFY: STARTEX-F (Startex Cover - Fabric) STARTEX-S (Startex Cover-Smooth) \$50.00

POK Pelvic Obliquity Kit \$50.00
Accommodates up to 1" Obliquities

Cushion Rigidizers can be found on Page 7

Kid*ab*ra Extra Outer Cushion Cover (Refer to cushion sizes above for proper fit)

▶ HCPCS Code: E2619



MODEL	COVER OPTION	MSRP
<input type="checkbox"/> KC(wwdd)	Kid*ab*ra	\$111.00

SPECIFY: WIDTH _____ DEPTH _____ QTY _____

MATRIX® CUSHIONS – US PRICE LIST/ORDER FORM

MATRIX® PS CUSHION: Standard – Positioning Cushion

NOTE: Actual cushion width is ½" narrower than stated size and cushion depth is 1¼" longer than stated depth due to rear cushion radius. Reference illustration on Page 3

- Cushion modifications are available and can be specified on Page 18 (cover will be non-reversible)
- Weight capacity up to 300 lbs
- Comes standard with inner cover and reversible Startex® outer cover - Cover Fabric Reference on Page 3

PS Cushion

▶ HCPCS Code: E2605



MODEL	FITS WIDTH	FITS DEPTH	MSRP
<input type="checkbox"/> PS1416	13", 14"	16", 17"	\$383.00
<input type="checkbox"/> PS1616	15", 16"	16", 17"	\$383.00
<input type="checkbox"/> PS1618	15", 16"	18", 19"	\$383.00
<input type="checkbox"/> PS1620	15", 16"	20", 21"	\$383.00
<input type="checkbox"/> PS1716	16", 17"	16", 17"	\$383.00
<input type="checkbox"/> PS1718	16", 17"	18", 19"	\$383.00
<input type="checkbox"/> PS1720	16", 17"	20", 21"	\$383.00
<input type="checkbox"/> PS1816	17", 18"	16", 17"	\$383.00
<input type="checkbox"/> PS1818	17", 18"	18", 19"	\$383.00
<input type="checkbox"/> PS1820	17", 18"	20", 21"	\$383.00
<input type="checkbox"/> PS2016	19", 20"	16", 17"	\$383.00
<input type="checkbox"/> PS2018	19", 20"	18", 19"	\$383.00
<input type="checkbox"/> PS2020	19", 20"	20", 21"	\$383.00
<input type="checkbox"/> NIC (NO Inner Cover option)			(-\$35)
<input type="checkbox"/> POK	Pelvic Obliquity Kit <i>Accommodates up to 1" Obliquities</i>		\$59.00

PS Extra Outer Cover (Refer to cushion sizes above for proper fit)

▶ HCPCS Code: E2619



MODEL	COVER OPTION	MSRP
<input type="checkbox"/> PSC(wwdd)	Startex -Reversible	\$99.00
SPECIFY: WIDTH _____ DEPTH _____ QTY _____		

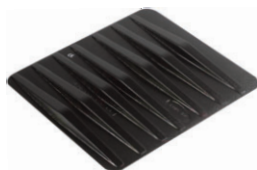
MATRIX® CUSHION RIGIDIZER

NOTE: Lightweight plastic seat insert fits between seat rails for level support and eliminates hammock effect of seat upholstery.

- Recommended for chairs with sling seat upholstery

Cushion Rigidizer

▶ HCPCS Code: E0992



MODEL	FITS WIDTH	FITS DEPTH	MSRP
<input type="checkbox"/> CR14S	12"-14"	12"-17"	\$135.00
<input type="checkbox"/> CR16S	15", 16"	15", 16"	\$135.00
<input type="checkbox"/> CR16M	15", 16"	17", 18"	\$135.00
<input type="checkbox"/> CR16L	15", 16"	19", 20"	\$135.00
<input type="checkbox"/> CR18S	17", 18"	15", 16"	\$135.00
<input type="checkbox"/> CR18M	17", 18"	17", 18"	\$135.00
<input type="checkbox"/> CR18L	17", 18"	19", 20"	\$135.00
<input type="checkbox"/> CR20S	19", 20"	15", 16"	\$135.00
<input type="checkbox"/> CR20M	19", 20"	17", 18"	\$135.00
<input type="checkbox"/> CR20L	19", 20"	19", 20"	\$135.00
<input type="checkbox"/> CR22M	21", 22"	17", 18"	\$135.00
<input type="checkbox"/> CR22L	21", 22"	19", 20"	\$135.00

MATRIX® CUSHIONS – US PRICE LIST/ORDER FORM

MATRIX® PSP CUSHION: Standard – Skin Protection & Positioning Cushion

NOTE: Actual cushion width is 1/2" narrower than stated size and cushion depth is 1 1/4" longer than stated depth due to rear cushion radius. Reference illustration on Page 3

- Cushion modifications are available and can be specified on Page 18 (cover will be non-reversible)
- Weight capacity up to 300 lbs
- Comes standard with inner cover and reversible Startex® outer cover - Cover Fabric Reference on Page 3

PSP Cushion

▶ HCPCS Code: E2607



MODEL	FITS WIDTH	FITS DEPTH	MSRP
<input type="checkbox"/> PSP1416	13", 14"	16", 17"	\$438.00
<input type="checkbox"/> PSP1616	15", 16"	16", 17"	\$438.00
<input type="checkbox"/> PSP1618	15", 16"	18", 19"	\$438.00
<input type="checkbox"/> PSP1620	15", 16"	20", 21"	\$438.00
<input type="checkbox"/> PSP1716	16", 17"	16", 17"	\$438.00
<input type="checkbox"/> PSP1718	16", 17"	18", 19"	\$438.00
<input type="checkbox"/> PSP1720	16", 17"	20", 21"	\$438.00
<input type="checkbox"/> PSP1816	17", 18"	16", 17"	\$438.00
<input type="checkbox"/> PSP1818	17", 18"	18", 19"	\$438.00
<input type="checkbox"/> PSP1820	17", 18"	20", 21"	\$438.00
<input type="checkbox"/> PSP2016	19", 20"	16", 17"	\$438.00
<input type="checkbox"/> PSP2018	19", 20"	18", 19"	\$438.00
<input type="checkbox"/> PSP2020	19", 20"	20", 21"	\$438.00
<input type="checkbox"/> NIC (NO Inner Cover option)			(-\$35)
<input type="checkbox"/> POK	Pelvic Obliquity Kit <i>Accommodates up to 1" Obliquities</i>		\$59.00

Cushion Rigidizers can be found on Page 7

PSP Extra Outer Cover (Refer to cushion sizes above for proper fit)

▶ HCPCS Code: E2619



MODEL	COVER OPTION	MSRP
<input type="checkbox"/> PSPC(wwdd)	Startex -Reversible	\$99.00

SPECIFY: WIDTH _____ DEPTH _____ QTY _____

MATRX® SEATING SERIES – US PRICE LIST

MATRX® MULTI CUSHION: Standard – Skin Protection & Positioning Cushion

NOTE: Actual cushion width is ½" narrower than stated size and cushion depth is 1" longer than stated depth due to rear cushion radius.

- Weight capacity up to 300 lbs
- Comes standard with inner cover and reversible Startex® outer cover - Cover Fabric Reference on Page 3

MULTI (Posture Seat with NEW GelFoam) Cushion

▶ HCPCS Code: E2607



MODEL	FITS WIDTH	FITS DEPTH	MSRP
<input type="checkbox"/> MM1414	13", 15"	14", 15"	\$521.00
<input type="checkbox"/> MM1416	13", 15"	16", 17"	\$521.00
<input type="checkbox"/> MM1616	15", 16"	16", 17"	\$521.00
<input type="checkbox"/> MM1618	15", 16"	18", 19"	\$521.00
<input type="checkbox"/> MM1620	15", 16"	20", 21"	\$521.00
<input type="checkbox"/> MM1716	16", 17"	16", 17"	\$521.00
<input type="checkbox"/> MM1718	16", 17"	18", 19"	\$521.00
<input type="checkbox"/> MM1720	16", 17"	20", 21"	\$521.00
<input type="checkbox"/> MM1816	17", 18"	16", 17"	\$521.00
<input type="checkbox"/> MM1818	17", 18"	18", 19"	\$521.00
<input type="checkbox"/> MM1820	17", 18"	20", 21"	\$521.00
<input type="checkbox"/> MM2016	19", 20"	16", 17"	\$521.00
<input type="checkbox"/> MM2018	19", 20"	18", 19"	\$521.00
<input type="checkbox"/> MM2020	19", 20"	20", 21"	\$521.00

MULTI Extra Outer Cover (Refer to cushion sizes above for proper fit)

▶ HCPCS Code: E2619



MODEL	COVER OPTION	MSRP
<input type="checkbox"/> MMC(w added)	Startex Reversible Cover	\$111.00

SPECIFY: WIDTH _____ DEPTH _____ QTY _____

MATRIX® CUSHIONS – US PRICE LIST/ORDER FORM

MATRIX® Vi CUSHION: Standard – Skin Protection & Positioning Cushion

NOTE: Actual cushion width is ½" narrower than stated size and cushion depth is 1½" longer than stated depth due to rear cushion radius. Reference illustration on Page 3

- Cushion modifications are available and can be specified on Page 18
- Weight capacity up to 300 lbs
- Comes standard with inner cover and outer covers made of Meshtex material
- Startex fabric or smooth fabric side up are available as an upcharge on Page 18 - Cover Fabric Reference on Page 3

Vi Cushion

▶ HCPCS Code: E2607



MODEL	FITS WIDTH	FITS DEPTH	MSRP
<input type="checkbox"/> MA1415-Vi	13", 14"	15", 16"	\$497.00
<input type="checkbox"/> MA1417-Vi	13", 14"	17", 18"	\$497.00
<input type="checkbox"/> MA1616-Vi	15", 16"	16", 17"	\$497.00
<input type="checkbox"/> MA1618-Vi	15", 16"	18", 19"	\$497.00
<input type="checkbox"/> MA1620-Vi	15", 16"	20", 21"	\$497.00
<input type="checkbox"/> MA1716-Vi	16", 17"	16", 17"	\$497.00
<input type="checkbox"/> MA1718-Vi	16", 17"	18", 19"	\$497.00
<input type="checkbox"/> MA1720-Vi	16", 17"	20", 21"	\$497.00
<input type="checkbox"/> MA1816-Vi	17", 18"	16", 17"	\$497.00
<input type="checkbox"/> MA1818-Vi	17", 18"	18", 19"	\$497.00
<input type="checkbox"/> MA1820-Vi	17", 18"	20", 21"	\$497.00
<input type="checkbox"/> MA2016-Vi	19", 20"	16", 17"	\$497.00
<input type="checkbox"/> MA2018-Vi	19", 20"	18", 19"	\$497.00
<input type="checkbox"/> MA2020-Vi	19", 20"	20", 21"	\$497.00

▶ HCPCS Code: E2608

<input type="checkbox"/> MA2218-Vi	21", 22"	18", 19"	\$556.00
<input type="checkbox"/> MA2220-Vi	21", 22"	20", 21"	\$556.00

COVER OPTIONS:

ADD

SPECIFY: STARTEX-F (Startex Cover - Fabric) STARTEX-S (Startex Cover-Smooth) \$59.00
 OCU-MA (Onyx Cover) FSU-MA(Fusion Cover) \$117.00

POK Pelvic Obliquity Kit \$50.00
Accommodates up to 1" Obliquities

Cushion Rigidizers can be found on Page 7

Vi Extra Outer Cushion Cover (Refer to cushion sizes above for proper fit)

▶ HCPCS Code: E2619



MODEL	COVER OPTION	MSRP
<input type="checkbox"/> C(wwdd)	Meshtex	\$117.00

SPECIFY: WIDTH _____ DEPTH _____ QTY _____
 (20" - 22" wide)

▶ ADP #: SESND1055

MODEL	COVER OPTION	MSRP
<input type="checkbox"/> C(wwdd)	Meshtex	\$129.00

SPECIFY: WIDTH _____ DEPTH _____ QTY _____

MATRIX® CUSHIONS – US PRICE LIST

MATRIX® LIBRA CUSHION: Standard – Adjustable Skin Protection and Positioning Cushion

NOTE: Actual cushion width is as stated and cushion depth is 1½" longer than stated depth due to rear cushion radius. Reference illustration on Page 3

- Weight capacity up to 300 lbs
- Comes standard with foam base, fluid sac, platilon inner liner and Startex® outer cover
- Spacetex is a no charge outer cover option; Infection Control additional \$50 - Cover Fabric Reference on Page 3

Libra Cushion

▶ HCPCS Code: E2624



MODEL	FITS WIDTH	FITS DEPTH	MSRP
<input type="checkbox"/> LC1412	14"	12", 13"	\$567.00
<input type="checkbox"/> LC1414	14"	14", 15"	\$567.00
<input type="checkbox"/> LC1416	14"	16", 17"	\$567.00
<input type="checkbox"/> LC1516	15"	16", 17"	\$567.00
<input type="checkbox"/> LC1518	15"	18", 19"	\$567.00
<input type="checkbox"/> LC1520	15"	20", 21"	\$567.00
<input type="checkbox"/> LC1616	16"	16", 17"	\$567.00
<input type="checkbox"/> LC1618	16"	18", 19"	\$567.00
<input type="checkbox"/> LC1620	16"	20", 21"	\$567.00
<input type="checkbox"/> LC1716	17"	16", 17"	\$567.00
<input type="checkbox"/> LC1718	17"	18", 19"	\$567.00
<input type="checkbox"/> LC1720	17"	20", 21"	\$567.00
<input type="checkbox"/> LC1816	18"	16", 17"	\$567.00
<input type="checkbox"/> LC1818	18"	18", 19"	\$567.00
<input type="checkbox"/> LC1820	18"	20", 21"	\$567.00
<input type="checkbox"/> LC1916	19"	16", 17"	\$567.00
<input type="checkbox"/> LC1918	19"	18", 19"	\$567.00
<input type="checkbox"/> LC1920	19"	20", 21"	\$567.00
<input type="checkbox"/> LC2016	20"	16", 17"	\$567.00
<input type="checkbox"/> LC2018	20"	18", 19"	\$567.00
<input type="checkbox"/> LC2020	20"	20", 21"	\$567.00

▶ HCPCS Code: E2624

<input type="checkbox"/> LC1622	16"	22", 23"	\$696.00
<input type="checkbox"/> LC1722	17"	22", 23"	\$696.00
<input type="checkbox"/> LC1822	18"	22", 23"	\$696.00
<input type="checkbox"/> LC1922	19"	22", 23"	\$696.00
<input type="checkbox"/> LC2022	20"	22", 23"	\$696.00

COVER OPTIONS:

SPECIFY: LC(wwdd) (Startex) LC(wwdd)-SP (Spacetex) LC(wwdd)-IC (Infection Control)*

*Additional \$50 for Infection Control Cover

Libra Extra Outer Cover (Refer to cushion sizes above for proper fit)

▶ HCPCS Code: E2619

Startex Outer Cover



Spacetex Outer Cover



Infection Control Outer Cover



MODEL	COVER OPTION	MSRP
<input type="checkbox"/> LCC(wwdd)	Startex	\$117.00
<input type="checkbox"/> LSC(wwdd)	Spacetex	\$146.00
<input type="checkbox"/> LIC(wwdd)	Infection Control	\$176.00
<input type="checkbox"/> LCPL(wwdd)	Inner Cushion Cover	\$41.00

SPECIFY SIZE: WIDTH _____ DEPTH _____ QTY _____

MATRX® CUSHIONS – US PRICE LIST

MATRX® LIBRA ADJUST CUSHION: Standard – Adjustable Skin Protection and Positioning Cushion

NOTE: Actual cushion width is as stated and cushion depth is 1½" longer than stated depth due to rear cushion radius. Reference illustration on Page 3

- Weight capacity up to 300 lbs
- Comes standard with foam base, fluid sac, 2 fluid supplement pacs, platilon inner liner and Startex® outer cover
- Spacetex is a no charge outer cover option;
Infection Control additional \$50 - Cover Fabric Reference on Page 3

Libra Adjust Cushion - Includes 2 Fluid Supplement Packs used to create Deep contour pelvic well ▶ HCPCS Code: E2624



MODEL	FITS WIDTH	FITS DEPTH	MSRP
<input type="checkbox"/> LC1412ADJ	14"	12", 13"	\$731.00
<input type="checkbox"/> LC1414ADJ	14"	14", 15"	\$731.00
<input type="checkbox"/> LC1416ADJ	14"	16", 17"	\$731.00
<input type="checkbox"/> LC1516ADJ	15"	16", 17"	\$731.00
<input type="checkbox"/> LC1518ADJ	15"	18", 19"	\$731.00
<input type="checkbox"/> LC1520ADJ	15"	20", 21"	\$731.00
<input type="checkbox"/> LC1616ADJ	16"	16", 17"	\$731.00
<input type="checkbox"/> LC1618ADJ	16"	18", 19"	\$731.00
<input type="checkbox"/> LC1620ADJ	16"	20", 21"	\$731.00
<input type="checkbox"/> LC1716ADJ	17"	16", 17"	\$731.00
<input type="checkbox"/> LC1718ADJ	17"	18", 19"	\$731.00
<input type="checkbox"/> LC1720ADJ	17"	20", 21"	\$731.00
<input type="checkbox"/> LC1816ADJ	18"	16", 17"	\$731.00
<input type="checkbox"/> LC1818ADJ	18"	18", 19"	\$731.00
<input type="checkbox"/> LC1820ADJ	18"	20", 21"	\$731.00
<input type="checkbox"/> LC1916ADJ	19"	16", 17"	\$731.00
<input type="checkbox"/> LC1918ADJ	19"	18", 19"	\$731.00
<input type="checkbox"/> LC1920ADJ	19"	20", 21"	\$731.00
<input type="checkbox"/> LC2016ADJ	20"	16", 17"	\$731.00
<input type="checkbox"/> LC2018ADJ	20"	18", 19"	\$731.00
<input type="checkbox"/> LC2020ADJ	20"	20", 21"	\$731.00

▶ HCPCS Code: E2624

<input type="checkbox"/> LC1622ADJ	16"	22", 23"	\$860.00
<input type="checkbox"/> LC1722ADJ	17"	22", 23"	\$860.00
<input type="checkbox"/> LC1822ADJ	18"	22", 23"	\$860.00
<input type="checkbox"/> LC1922ADJ	19"	22", 23"	\$860.00
<input type="checkbox"/> LC2022ADJ	20"	22", 23"	\$860.00

COVER OPTIONS:

- SPECIFY: LC(wwdd)ADJ (Startex) LCSP(wwdd)ADJ (Spacetex)
 LCIC(wwdd)ADJ (Infection Control) - *Additional \$50 for Infection Control Cover*

Libra Adjust Extra Outer Cover (Refer to cushion sizes above for proper fit)

▶ HCPCS Code: E2619

Startex Outer Cover



Spacetex Outer Cover



Infection Control Outer Cover



MODEL	COVER OPTION	MSRP
<input type="checkbox"/> LCC(wwdd)	Startex	\$117.00
<input type="checkbox"/> LSC(wwdd)	Spacetex	\$146.00
<input type="checkbox"/> LIC(wwdd)	Infection Control	\$176.00
<input type="checkbox"/> LCPL(wwdd)	Inner Cushion Cover	\$41.00

SPECIFY SIZE: WIDTH _____ DEPTH _____ QTY _____

MATRX® CUSHIONS – US PRICE LIST/ORDER FORM

MATRX® PS HEAVY-DUTY CUSHION: Bariatric – Positioning Cushion

NOTE: Actual cushion width is as stated and cushion depth is 1½" longer than stated depth due to rear cushion radius. Reference illustration on Page 3

- Weight capacity up to 600 lbs
- Stock sizes come standard with inner cover and Startex® reversible outer cover - Cover Fabric Reference on Page 3

PS Heavy-Duty Cushion - Stock Sizes (Reversible Outer Cover)

▶ HCPCS Code: /E2606 (Sizes 22" W and greater)



MODEL	FITS WIDTH	FITS DEPTH	MSRP
<input type="checkbox"/> PS2218	21", 22"	18", 19"	\$605.00
<input type="checkbox"/> PS2220	21", 22"	20", 21"	\$605.00
<input type="checkbox"/> PS2222	21", 22"	22", 23"	\$605.00
<input type="checkbox"/> PS2418	23", 24"	18", 19"	\$605.00
<input type="checkbox"/> PS2420	23", 24"	20", 21"	\$605.00
<input type="checkbox"/> PS2422	23", 24"	22", 23"	\$605.00
<input type="checkbox"/> PS2618	25", 26"	18", 19"	\$605.00
<input type="checkbox"/> PS2620	25", 26"	20", 21"	\$605.00
<input type="checkbox"/> PS2622	25", 26"	22", 23"	\$605.00
<input type="checkbox"/> NIC (NO Inner Cover option)			(-\$35)

PS Heavy-Duty Extra Outer Cover - Stock Sizes (Reversible)

▶ HCPCS Code: E2619



MODEL	FITS WIDTH	FITS DEPTH	MSRP
PSC(wwdd)-HD	REFER TO CUSHION SIZES ABOVE		\$205.00
SPECIFY:	WIDTH _____	DEPTH _____	<input type="checkbox"/> QTY _____

PS Heavy-Duty Cushion - Custom Sizes (Two week lead time)

HCPCS Code: /E2605 (Sizes under 22" W) E2606 (Sizes 22" W and greater)



PSC(wwdd)-HD	REFERENCE CHART BELOW	\$695.00	
SPECIFY:	WIDTH _____	DEPTH _____	<input type="checkbox"/> QTY _____
STARTEX COVER:	<input type="checkbox"/> Fabric side up	<input type="checkbox"/> Infection control side up	

		W I D T H (WW)									
		21"	22"	23"	24"	25"	26"	27"	28"	29"	30"
D E P T H (DD)	16"	X	X	X	X	X	X	X	X	X	X
	17"	X	X	X	X	X	X	X	X	X	X
	18"	X	S	X	S	X	S	X	X	X	X
	19"	X	X	X	X	X	X	X	X	X	X
	20"	X	S	X	S	X	S	X	X	X	X
	21"	X	X	X	X	X	X	X	X	X	X
	22"	X	S	X	S	X	S	X	X	X	X
	23"	X	X	X	X	X	X	X	X	X	X
	24"	X	X	X	X	X	X	X	X	X	X
	25"	X	X	X	X	X	X	X	X	X	X
	26"	X	X	X	X	X	X	X	X	X	X
	27"	X	X	X	X	X	X	X	X	X	X
	28"	X	X	X	X	X	X	X	X	X	X
29"	X	X	X	X	X	X	X	X	X	X	
30"	X	X	X	X	X	X	X	X	X	X	

S Stock Item with Startex® reversible outer cover
X NON Stock Item - Additional Lead time

PS Heavy-Duty Extra Outer Cover - Custom Sizes (Two week lead time)

▶ HCPCS Code: E2619



PSC(wwdd)-HD	REFERENCE CHART ABOVE	\$175.00	
SPECIFY:	WIDTH _____	DEPTH _____	<input type="checkbox"/> QTY _____
STARTEX COVER:	<input type="checkbox"/> Fabric side up	<input type="checkbox"/> Infection control side up	

* Made to order and non-refundable

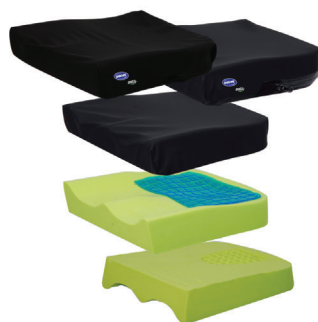
MATRX® SEATING SERIES – US PRICE LIST

MATRX® PSP HEAVY-DUTY CUSHION: Bariatric – Skin Protection & Positioning Cushion

NOTE: Actual cushion width is as stated and cushion depth is 1½" longer than stated depth due to rear cushion radius. Reference illustration on Page 3

- Weight capacity up to 600 lbs
- Stock sizes come standard with inner cover and Startex® reversible outer cover - Cover Fabric Reference on Page 3

PSP Heavy-Duty Cushion - Stock Sizes (Reversible Outer Cover) ▶ HCPCS Code: E2607 (Sizes up to 21" W)/E2608 (Sizes 22" W and greater)



MODEL	FITS WIDTH	FITS DEPTH	MSRP
<input type="checkbox"/> PSP2218	21", 22"	18", 19"	\$660.00
<input type="checkbox"/> PSP2220	21", 22"	20", 21"	\$660.00
<input type="checkbox"/> PSP2222	21", 22"	22", 23"	\$660.00
<input type="checkbox"/> PSP2418	23", 24"	18", 19"	\$660.00
<input type="checkbox"/> PSP2420	23", 24"	20", 21"	\$660.00
<input type="checkbox"/> PSP2422	23", 24"	22", 23"	\$660.00
<input type="checkbox"/> PSP2618	25", 26"	18", 19"	\$660.00
<input type="checkbox"/> PSP2620	25", 26"	20", 21"	\$660.00
<input type="checkbox"/> PSP2622	25", 26"	22", 23"	\$660.00
<input type="checkbox"/> NIC (NO Inner Cover option)			(-\$35)

PSP Heavy-Duty Extra Outer Cover - Stock Sizes (Reversible Outer Cover) ▶ HCPCS Code: E2619



MODEL	COVER OPTION	MSRP
<input type="checkbox"/> PSPC(wwdd)-HD	Startex-Reversible	\$205.00

SPECIFY: WIDTH _____ DEPTH _____ QTY _____

PSP Heavy-Duty Cushion - Custom Sizes (Two week lead time)* HCPCS Code: E2607 (Sizes up to 21" W)/E2608 (Sizes 22" W and greater)



MODEL	FITS WIDTH	FITS DEPTH	MSRP
PSP(wwdd)-HD	REFERENCE CHART BELOW		\$745.00

SPECIFY: WIDTH _____ DEPTH _____ QTY _____

STARTEX COVER: Fabric side up Infection control side up

	W I D T H (WW)									
	21"	22"	23"	24"	25"	26"	27"	28"	29"	30"
16"	x	x	x	x	x	x	x	x	x	x
17"	x	x	x	x	x	x	x	x	x	x
18"	x	S	x	S	x	S	x	x	x	x
19"	x	x	x	x	x	x	x	x	x	x
20"	x	S	x	S	x	S	x	x	x	x
21"	x	x	x	x	x	x	x	x	x	x
22"	x	S	x	S	x	S	x	x	x	x
23"	x	x	x	x	x	x	x	x	x	x
24"	x	x	x	x	x	x	x	x	x	x
25"	x	x	x	x	x	x	x	x	x	x
26"	x	x	x	x	x	x	x	x	x	x
27"	x	x	x	x	x	x	x	x	x	x
28"	x	x	x	x	x	x	x	x	x	x
29"	x	x	x	x	x	x	x	x	x	x
30"	x	x	x	x	x	x	x	x	x	x

S Stock Item with Startex® reversible outer cover

x NON Stock Item - Additional Lead time

PSP Heavy-Duty Extra Outer Cover - Custom Sizes (Two week lead time) ▶ HCPCS Code: E2619



PSPC(wwdd)-HD	REFERENCE CHART ABOVE	\$175.00
---------------	-----------------------	----------

SPECIFY: WIDTH _____ DEPTH _____ QTY _____

STARTEX COVER: Fabric side up Infection control side up

MATRIX® CUSHIONS – US PRICE LIST/ORDER FORM

MATRIX® MULTI HEAVY-DUTY CUSHION: Bariatric – Skin Protection & Positioning Cushion

NOTE: Actual cushion width is ½" narrower than stated size and cushion depth is 1" longer than stated depth due to rear cushion radius.

- Weight capacity up to 600 lbs
- Comes standard with inner cover and reversible Startex® outer cover - Cover Fabric Reference on Page 3

new

MULTI Heavy-Duty (Posture Seat with NEW GelFoam) Cushion

▶ HCPCS Code: E2608

REVERSIBLE COVER



MODEL	FITS WIDTH	FITS DEPTH	MSRP
<input type="checkbox"/> MM2216	21", 22"	16", 17"	\$696.00
<input type="checkbox"/> MM2218	21", 22"	18", 19"	\$696.00
<input type="checkbox"/> MM2220	21", 22"	20", 21"	\$696.00
<input type="checkbox"/> MM2222	21", 22"	22", 23"	\$696.00

MULTI Heavy-Duty Extra Outer Cover (Refer to cushion sizes above for proper fit)

▶ HCPCS Code: E2619

REVERSIBLE COVER



MODEL	COVER OPTION	MSRP
<input type="checkbox"/> MMC(wwdd)	Startex Reversible Cover	\$175.00

SPECIFY: WIDTH _____ DEPTH _____ QTY _____

MATRIX® Vi HEAVY-DUTY CUSHION: Bariatric – Skin Protection & Positioning Cushion

NOTE: Actual cushion width is as stated and cushion depth is 1½" longer than stated depth due to rear cushion radius. Reference illustration on Page 3

- Cushion modifications are available and can be specified on Page 18
- Weight capacity up to 600 lbs
- Comes standard with inner cover and outer covers made of mesh material
- Cover Fabric Reference on Page 3

Vi Heavy-Duty Cushion (Two week lead time)* HCPCS Code: E2607 (Sizes up to 21" W)/E2608 (Sizes 22" W and greater)



MODEL	FITS WIDTH	FITS DEPTH	MSRP
MA(wwdd)-Vi-HD Sizes 23" W and greater	REFERENCE CHART BELOW		\$625.00
MA(wwdd)-MOD Sizes up to 22" W	REFERENCE CHART BELOW		\$625.00

SPECIFY: WIDTH _____ DEPTH _____ QTY _____

		W I D T H (WW)												
		18"	19"	20"	21"	22"	23"	24"	25"	26"	27"	28"	29"	30"
D E P T H (DD)	18"				X	X	X	S	X	X	X	X	X	X
	19"				X	X	X	X	X	X	X	X	X	X
	20"				X	X	X	S	X	X	X	X	X	X
	21"	X	X	X	X	X	X	X	X	X	X	X	X	X
	22"	X	X	X	X	X	X	S	X	X	X	X	X	X
	23"	X	X	X	X	X	X	X	X	X	X	X	X	X
	24"	X	X	X	X	X	X	X	X	X	X	X	X	X
25"	X	X	X	X	X	X	X	X	X	X	X	X	X	
26"	X	X	X	X	X	X	X	X	X	X	X	X	X	

S Stock Item
 X NON Stock Item - Additional Lead time

Vi Heavy-Duty Extra Outer Cover (Two week lead time)*

▶ HCPCS Code: E2619



<input type="checkbox"/> C(wwdd)	Meshtex	\$176.00
----------------------------------	---------	----------

SPECIFY: WIDTH _____ DEPTH _____ QTY _____

UPGRADE: ADD

SPECIFY: STARTEX-F (Startex Cover - Fabric) \$50.00

* Made to order and non-refundable

MATRIX® CUSHIONS – US PRICE LIST/ORDER FORM

MATRIX® LIBRA HEAVY-DUTY CUSHION: Bariatric – Adjustable Skin Protection and Positioning Cushion

NOTE: Actual cushion width is as stated and cushion depth is 1½" longer than stated depth due to rear cushion radius. Reference illustration on Page 3

- Weight capacity up to 500 lbs
- Comes standard with foam base, fluid sac, platilon inner liner and Startex® outer cover
- Spacetex is a no charge outer cover option; Infection Control additional \$50 (all non-reversible) - Cover Fabric Reference on Page 3

Libra Heavy-Duty Cushion

▶ HCPCS Code: E2624



MODEL	FITS WIDTH	FITS DEPTH	MSRP
<input type="checkbox"/> LC2118	21"	18", 19"	\$614.00
<input type="checkbox"/> LC2120	21"	20", 21"	\$614.00
<input type="checkbox"/> LC2122	21"	22", 23"	\$696.00
▶ HCPCS Code: E2625			
<input type="checkbox"/> LC2218	22"	18", 19"	\$696.00
<input type="checkbox"/> LC2220	22"	20", 21"	\$696.00
<input type="checkbox"/> LC2222	22"	22", 23"	\$696.00
<input type="checkbox"/> LC2318	23"	18", 19"	\$696.00
<input type="checkbox"/> LC2320	23"	20", 21"	\$696.00
<input type="checkbox"/> LC2322	23"	22", 23"	\$696.00
<input type="checkbox"/> LC2418	24"	18", 19"	\$696.00
<input type="checkbox"/> LC2420	24"	20", 21"	\$696.00
<input type="checkbox"/> LC2422	24"	22", 23"	\$696.00

COVER OPTIONS:

SPECIFY: LC(wwdd) (Startex) LC(wwdd)-SP (Spacetex) LC(wwdd)-IC (Infection Control)*
 *Additional \$50 for Infection Control Cover

Libra Heavy-Duty Extra Outer Cover (Refer to cushion sizes above for proper fit)

▶ HCPCS Code: E2619

Startex Outer Cover



Spacetex Outer Cover



Infection Control Outer Cover



MODEL	COVER OPTION	MSRP
<input type="checkbox"/> LCC(wwdd)	Startex	\$146.00
<input type="checkbox"/> LSC(wwdd)	Spacetex	\$176.00
<input type="checkbox"/> LIC(wwdd)	Infection Control	\$193.00
<input type="checkbox"/> LCPL(wwdd)	Inner Cushion Cover	\$41.00

SPECIFY SIZE: WIDTH _____ DEPTH _____ QTY _____

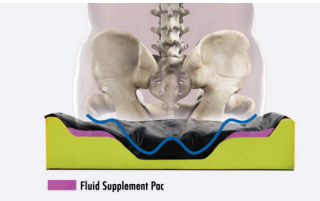
MATRX® CUSHIONS – US PRICE LIST

MATRX® LIBRA ADJUST HEAVY-DUTY CUSHION: Bariatric – Adjustable Skin Protection and Positioning Cushion

NOTE: Actual cushion width is as stated and cushion depth is 1½" longer than stated depth due to rear cushion radius. Reference illustration on Page 3

- Weight capacity up to 500 lbs
- Comes standard with foam base, fluid sac, 2 fluid supplement packs, platilon inner liner and Startex® outer cover
- Spacetex is a no charge outer cover option; Infection Control additional \$50 - Cover Fabric Reference on Page 3

Libra Adjust Heavy-Duty Cushion - Includes 2 Fluid Supplement Packs used to create Deep contour pelvic well ▶ HCPCS Code: E2624



MODEL	FITS WIDTH	FITS DEPTH	MSRP
<input type="checkbox"/> LC2118ADJ	21"	18", 19"	\$778.00
<input type="checkbox"/> LC2120ADJ	21"	20", 21"	\$778.00
<input type="checkbox"/> LC2122ADJ	21"	22", 23"	\$860.00
▶ HCPCS Code: E2625			
<input type="checkbox"/> LC2218ADJ	22"	18", 19"	\$860.00
<input type="checkbox"/> LC2220ADJ	22"	20", 21"	\$860.00
<input type="checkbox"/> LC2222ADJ	22"	22", 23"	\$860.00
<input type="checkbox"/> LC2318ADJ	23"	18", 19"	\$860.00
<input type="checkbox"/> LC2320ADJ	23"	20", 21"	\$860.00
<input type="checkbox"/> LC2322ADJ	23"	22", 23"	\$860.00
<input type="checkbox"/> LC2418ADJ	24"	18", 19"	\$860.00
<input type="checkbox"/> LC2420ADJ	24"	20", 21"	\$860.00
<input type="checkbox"/> LC2422ADJ	24"	22", 23"	\$860.00

COVER OPTIONS:

- SPECIFY: LC(wwdd)ADJ (Startex) LC(wwdd)ADJ-SP (Spacetex)
 LC(wwdd)ADJ-IC (Infection Control)*- *Additional \$50 for Infection Control Cover*

Libra Adjust Heavy-Duty Extra Outer Cover (Refer to cushion sizes above for proper fit) ▶ HCPCS Code: E2619

Startex Outer Cover



Spacetex Outer Cover



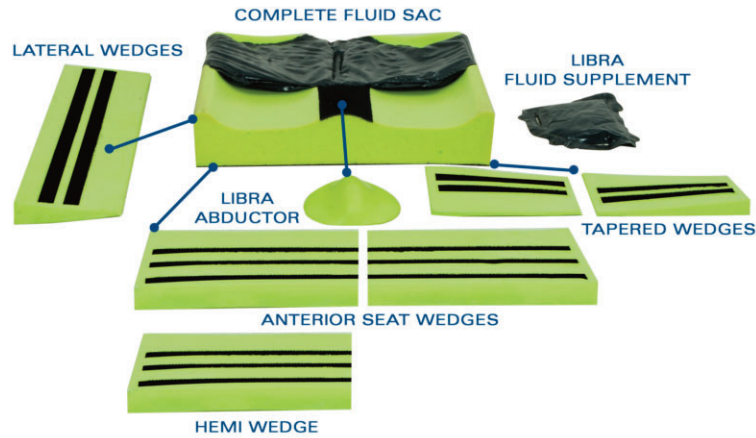
Infection Control Outer Cover



MODEL	COVER OPTION	MSRP
<input type="checkbox"/> LCC(wwdd)	Startex	\$146.00
<input type="checkbox"/> LSC(wwdd)	Spacetex	\$176.00
<input type="checkbox"/> LIC(wwdd)	Infection Control	\$193.00
<input type="checkbox"/> LCPL(wwdd)	Inner Cushion Cover	\$41.00

SPECIFY SIZE: WIDTH _____ DEPTH _____ QTY _____

MATRIX® LIBRA FIT KIT COMPONENTS & OTHER COMPONENTS:



Libra Components

MODEL	COMPONENT	MSRP
<input type="checkbox"/> LAB	Libra Abductor <i>1" Abductor built-up - Top mounted</i>	\$70.00
<input type="checkbox"/> FTSW	Anterior Seat Wedges <i>1" taper front to rear, 2 pieces, underside mounted</i>	\$146.00
<input type="checkbox"/> FTHW	Hemi Wedge <i>1" taper front to rear, one piece, underside mounted</i>	\$76.00
<input type="checkbox"/> FTTW-LFRR	Tapered Wedge LFRR <i>¾" Tapered wedge for users's Left front or Right rear - Underside mounted</i>	\$59.00
<input type="checkbox"/> FTTW-RFLR	Tapered Wedge RFLR <i>¾" Tapered wedge for users's Right front or Left rear - Underside mounted</i>	\$59.00
<input type="checkbox"/> LFS	Libra Fluid Supplement (each) <i>Accommodate pelvic obliquity, or 2 sacs bilaterally for extra depth pelvic well</i>	\$88.00
<input type="checkbox"/> LLW	Lateral Wedge <i>1" Lateral wedge increases hip/thigh loading, - Underside mounted</i>	\$88.00
<input type="checkbox"/> LFK	Complete Libra Fit Kit <i>Components: LAB, FTSW, FTHW, FTTW-LFRR, FTTW-RFLR, LFS x 2</i>	\$509.00
<input type="checkbox"/> CLCFP-M	Complete Libra Cushion Fluid Sac <i>For cushions 18" wide or under</i>	\$369.00
	SPECIFY CUSHION SIZE:	WIDTH _____ DEPTH _____
<input type="checkbox"/> CLCFP-L	Complete Libra Cushion Fluid Sac <i>For cushions 19" wide or greater</i>	\$369.00
	SPECIFY CUSHION SIZE:	WIDTH _____ DEPTH _____
<input type="checkbox"/> LCPL-WWDD	Platilon Inner Liner	\$41.00
	SPECIFY CUSHION SIZE:	WIDTH _____ DEPTH _____

MATRIX® CUSHIONS – US PRICE LIST/ORDER FORM

MATRIX® PROTECT - Infection Control Slipcover (Fits all Matrix Cushion Models)*- Custom Sizes - 4 week lead time

NOTE: Fits cushion sizes listed below as well as (-1" in width/depth)

- Wipeable Startex™ "Shower Cap" Style slipcover – easy to apply and remove
- Stands up to repeated use of hospital-grade disinfectants
- Machine-washable at temperatures required to kill bacteria and viruses

If ordered with a Cushion

PROTMCU.....\$76.00

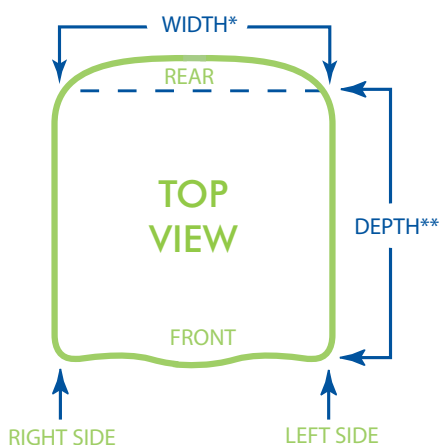
Infection Slipcover Only

PROTMC.....\$111.00



SPECIFY: QTY _____
 1414 1616 1816 2016
 1416 1618 1818 2018
 1418 1620 1820 2020
 SPECIFY: WIDTH _____ DEPTH _____ QTY _____

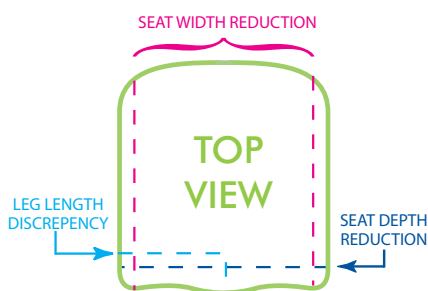
CUSHION MODIFICATIONS: (Products ordered with custom sizing or modifications may not be cancelled after time of order)



NOTE: Rear Cushion radius included on all PS, PSP, Multi, VI & Libra Cushions.

Notes:

Cushion Modifications (Two week lead time)



MODEL	COMPONENT	MSRP
<input type="checkbox"/> SDR	Seat Depth Reduction Less: <input type="checkbox"/> 1 <input type="checkbox"/> 2" <input type="checkbox"/> 3" <input type="checkbox"/> 4" Specify _____	\$117.00
<input type="checkbox"/> SWR	Seat Width Reduction Less: <input type="checkbox"/> 1"	\$117.00
<input type="checkbox"/> LLDR	Leg Length Discrepancy - Right Less: <input type="checkbox"/> 1" <input type="checkbox"/> 2" Specify _____	\$117.00
<input type="checkbox"/> LLDL	Leg Length Discrepancy - Left Less: <input type="checkbox"/> 1" <input type="checkbox"/> 2" Specify _____	\$117.00
<input type="checkbox"/> MAC	Miscellaneous Modification <i>Please use a diagram on the left to indicate required modifications- Requires approval</i>	\$117.00
<input type="checkbox"/> NSF	Non-Standard Fabric Selection <i>Available for all Cushions</i>	\$88.00

Extra Cover Modifications (Two week lead time)

MODEL	COMPONENT	MSRP
<input type="checkbox"/> ECM	Outer Cover Modification <i>Accommodates /SDR/SWR/LLDL/LLDR/MAC</i>	\$59.00

Inner Cover Modifications (Two week lead time)

MODEL	COMPONENT	ADD
<input type="checkbox"/> CIC	Extra Inner Cover <i>Accommodates /SDR/SWR/LLDL/LLDR/MAC</i>	+\$88.00